



# PLANTING AND SEEDING

PRODUCT SUPPORT



2018 EDITION

**CASE IH**  
AGRICULTURE



# DIG DEEP—WITH EARTH METAL<sup>®</sup> BLADES AND SWEEPS.

Set the stage for higher yields—with the strength and durability of Case IH Earth Metal disk blades and sweeps. With tough, flexible proprietary-steel construction—based on years of in-depth research on tillage and planting agronomics—these disk blades handle even the toughest residue. Thorough testing ensures superior durability and long life—saving you unnecessary downtime. And, with one of the largest selections in the industry, there's an Earth Metal blade or sweep for every equipment brand and application.

Visit your Case IH dealer to view the entire Earth Metal line today.



# PLANT THE SEEDS OF SUCCESS.



## EVERY PLANT. EVERY ROW. EVERY ACRE.

Take on spring and rethink productivity with genuine Case IH parts and service for record-yield performance. It's planting season—and time to set a new standard of productivity and efficiency. From soil prep and seed placement to optimization and nutrition, our agronomic approach delivers uniform emergence. Case IH genuine parts are backed by proven planting science—and designed to help you make the most of your growing environment.



<b>Earth Metal</b> . . . . .	04
<b>Planters</b> . . . . .	06
<b>Precision Planting</b> . . . . .	23
<b>Air Hoe Drills</b> . . . . .	26
<b>Air Carts</b> . . . . .	32
<b>Box Drills</b> . . . . .	35
<b>Single Disk Drills</b> . . . . .	36
<b>Maintenance Products</b> . . . . .	38
<b>Tools and Accessories</b> . . . . .	40
<b>Accessories</b> . . . . .	42
<b>Precision Farming</b> . . . . .	44
<b>Remanufactured Parts</b> . . . . .	46
<b>Index</b> . . . . .	48

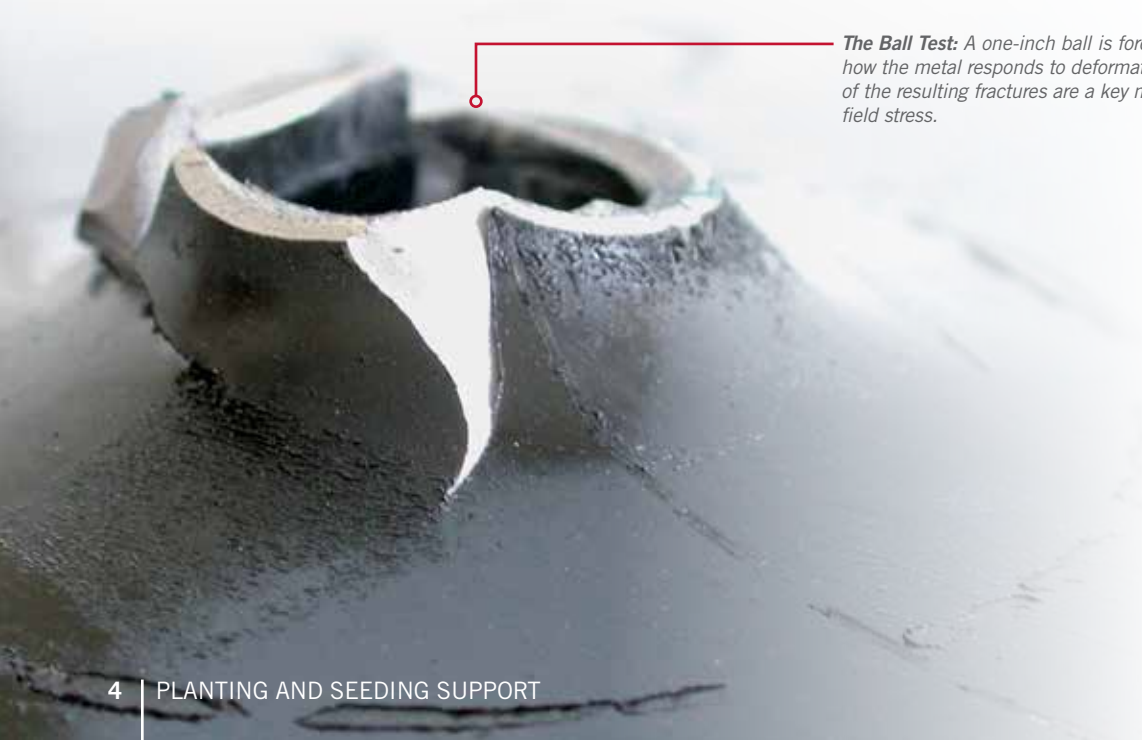


## PROVEN. PREFERRED. POWERFUL.

Not all sweeps and disk blades are created equal. The stronger, sharper and longer-wearing they are, the fewer headaches in the field—and the fewer unnecessary drains on your profit. Less breakage and more efficient seedbed preparation and planting mean higher yields.

But what goes into a better sweep, opener or disk blade? The superior design of Case IH Earth Metal® ground-engaging components is based on years of in-depth research on tillage and planting agronomics—the science behind maximum yields.

The resulting product is tougher, longer-lasting and significantly more durable in the face of harsh field and crop conditions.



**The Ball Test:** A one-inch ball is forced through a half-inch hole to study how the metal responds to deformation and cracking. The length and shape of the resulting fractures are a key measure of a disk's ability to withstand field stress.



## WHAT GOES INTO BETTER DISK BLADES? A LOT.

Here's an inside look at the Earth Metal manufacturing and testing process.

- 1** Iron ore, limestone and coal to restrict contaminants such as copper, nickel, etc.; no steel scrap or alloying materials. Contaminants weaken the end product.
- 2** Oxygen furnace, not Electric Arc furnace. Electric Arc furnaces permit copper and nickel contaminants.
- 3** Heated to create the required Austenite structure, then simultaneous, not sequential, forming and very rapid quenching. Cooling 100 degrees Celsius per second to achieve pure tempered Martensite structure.
- 4** Earth Metal microscopic structure encapsulates sulfur, eliminating layers of sulfur, which are natural fracture points.
- 5** These steps achieve extreme strength for longer wear on the farm with ductility, flexibility to rebound back to original shape after hitting hard objects in fields. This means more productive time when required by you.
- 6** Material-handling robots assure quality control and consistency to form and cool simultaneously in seconds, every time.
- 7** These blanks then undergo further processing, including edging, notching, shaping and heat-treating.
- 8** They are then coated with high-gloss enamel, which is baked to a smooth, hard finish that improves surface appearance and provides rust protection. An inline oven draws each blade individually, which relieves internal stresses and improves ductility and quality.
- 9** Brinell or Rockwell tests measure hardness to ensure the disk blade is resistant to wear. The Ball test measures toughness by forcing a polished steel ball through the disk blade; the length and shape of the resulting fractures are measures of the disk blade's ability to resist cracking.
- 10** Disk blades are also tested for elasticity under load. This test applies pressure to the blade—the propensity of the blade to return to its original shape afterward is a measure of its ability to resist impact.

### WE'VE GOT A DISK BLADE FOR THAT.

The Earth Metal line is one of the largest in the industry—with disk blade options for nearly every equipment brand and application. The Super Sharp™ edges on our latest disk blades, for example, are ideal for tough field conditions and genetically modified crops.





## Case IH Opener Disk Assemblies

PART NO.	DESCRIPTION	APPLICATION
84389196	14" x 3.5mm leading	800-900-950-955 Cyclo planters
84389195	14" x 3.5mm trailing	
47828496	14" x 3.5mm leading	All 1200 series Early Riser and Cyclo planters
84398746	14" x 3.5mm trailing	
84416318	14" x 4.5mm leading	
84416319	14" x 4.5mm trailing	
73341803	14" x 5mm leading	
73341804	14" x 5mm trailing	
141464C92	13.5" x 3mm	Fertilizer opener; all Early Riser and Cyclo planters
603020R92	14" x 3mm	5100/5200/6200/6300 drills, legacy IH drills
1344911C3	14" x 2.5mm	5300/5400/5500 drills
73357622*	15" x 4mm	Case IH twin-row planters
1277891C91	8" x 2mm	Closing disk assembly for all Case IH planters
48118295	15" x 4.5mm leading	2150 Series
48118296	15" x 4.5mm leading	2150 Series
48120873	HD 15" x 4.5mm leading	2150 Series
48120874	HD 15" x 4.5mm leading	2150 Series
48118293	Bearing ball opener	2150 Series

\*Not Earth Metal



## DISK ASSEMBLIES FOR CASE IH PLANTERS AND DRILLS

### Earth Metal® Blade

Earth Metal blades last significantly longer and are measurably stronger than conventional blades.

### Wobble Reduction

New process reduces wobble for improved performance.

### Machined Edge

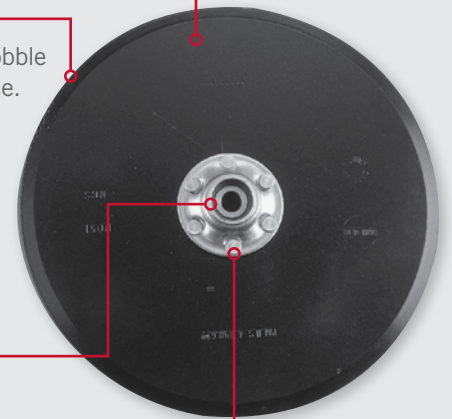
Improved penetration in conventional and no-till applications.

### Extended Life and Reduced Wear

Gothic Arch Design with two-point contact between the balls and the races to give a higher load rating and to reduce wobble. This design helps to extend bearing life and reduce opener disk wear.

### Heavy-Duty Pressed Formed Hub

These hubs have reinforcing splines to prevent hub failures.



## All-Makes – Earth Metal® Opener Assemblies

PART NO.	MANUFACTURER	DESCRIPTION	APPLICATION	REPLACES	SIZE
73343551	Bourgault	Flat coulter with countersunk holes	Disk drills/mid row banders®	2085-03	20.5" × 5mm
73343553	Bourgault	Flat coulter	Disk drills/mid row banders	6717-99	20.5" × 4.5mm
73343554	Bourgault	Flat coulter	Disk drills/mid row banders	6407-25	18.4" × 4.5mm
141464C92	Crustbuster	Trailing double disk assembly	Use as trailing blade on Crustbuster 4000, 4020 and Min-Til 4025, 4030, 4740, 4745, 5020.	863597	13-1/2" × 3mm
B500276	Crustbuster	Leading double disk assembly	Use as leading blade on Crustbuster 4000, 4020 and Min-Til 4025, 4030, 4740, 4745, 5020. Use as leading or trailing blade on Min-Til 5007, 5010, 5015, 5527, 5530, 5536.	859090	15" × 3mm
428354A1	Crustbuster	HD disk opener assembly	Use as leading or trailing blade on Min-Til 5007, 5010, 5015, 5527, 5530, 5536.	859090	15" × 3.5mm
416017A1	Crustbuster	Opener disk blade use with bearing kit – 435480A1	Plain 16" disk blade. Fits All-Plant 3400, 4000, 4610, 4613, 4615, 4620, 4740 and 4745.	GD5029	16.1" × 4 mm
416018A1	Crustbuster	Notched opener disk blade use with bearing kit – 435480A1	Notched 16" disk blade. Fits All-Plant 3400, 4000, 4610, 4613, 4615, 4620, 4740 and 4745	GD5037	16.1" × 4 mm
435480A1	Crustbuster	Bearing kit for openers (2 bearings and bolts)	Fits All-Plant 3400, 4000, 4610, 4613, 4615, 4620, 4740 and 4745	400580/401042	(2 Bearings and Bolts)
416443A1	Great Plains	Disk opener assembly	Various grain drills	107-054S	13-1/2" × 3mm
73357622*	Great Plains	Disk opener assembly	Late model drills and planters	404-121S	15" × 4mm
73342970	Hiniker	Opener disk	Drills	K16177HAS	16" × 5mm
141464C92	John Deere	Fertilizer disk opener assembly	MaxEmerge™ row units; 7000, 7100, 7200, 1700	AA57466	13-1/2" × 3mm
B500276	John Deere	Disk opener assembly	7000, 7200, most 1700 not XP	AA37474/AA55927	15" × 3mm
428354A1	John Deere	HD disk opener assembly	7000, 7200, most 1700 not XP	AA53860	15" × 3.5mm
133480A1	John Deere	Opener disk use with bearing kit – 419594A1	750-1850 Drills	N283804	18 1/10" × 5mm
419594A1	John Deere	Opener disk bearing kit	750-1850 Drills	—	—
B500277	John Deere	XP row units	—	AA65248	15" × 3.5mm
428354A1	Kinze	HD disk opener assembly	3000 Series	GA8324	15" × 3.5mm
B500276	Kinze	HD disk opener assembly	2000 and 3000 series row units	GA2013	15" × 3mm
416443A1	Krause	Disk opener assembly	5200, 5300, 5400 Drills	5250-484-0A,	13-1/2" × 3mm
410526A1	Krause	Disk opener assembly	5200, 5300, 5400 Drills	5250-484-0A, RH	13-1/2" × 3mm
416443A1	Lilliston	Disk opener assembly	Disk Drills	6603280/6603281	13-1/2" × 3mm
416015A1	Marliss, Sukup, Best, M&W	Seed opener disk	Disk Drills	W701010	13" × 3mm
416015A1	Sunflower	Seed opener disk	Grain Drills	555-002	13" × 3mm
ZSN18358	Sunflower	Disk opener assembly	9100 Through 9600 series drills	N9753/SN18166	15" × 3.5mm
416443A1	Tye, UFT	Disk opener assembly	Various Tye, UFT and Deere grain drills	540-647	13-1/2" × 3mm
B500276	White	Disk opener assembly	6000 Series	700167073	15" × 3mm
428354A1	White	HD disk opener assembly	8000 Series	700164107	15" × 3.5mm
141464C92	White	Disk opener assembly	5100, 5400, 5700 Seed and Fert.	247169BS	13-1/2" × 3mm

\*Not Earth Metal



## Rotary Scraper

**Part No. 1547680C1**

**Application:** 800-955 Cyclo and 1200 Early Riser planters

- Recommended in abrasive or sticky soil conditions



## Deluxe Scraper Kits

**Part No. 47673435**  
(for newer models after s/n 19344)

**Part No. 47678426**  
(for previous models before s/n 19344)

**Application:**  
800, 900, 950, 955, 1200 planters

- Kit includes scraper assemblies (L.H. and R.H.) and mounting hardware



## Scraper Blade Kit

**Part No. B95271**

**Application:** 800, 900, 950, 955, 1200 planters

- Kit includes scraper blades and rivets



## Point/Shoe Planter Kits

**Part No. B94595**  
(Shown)

**Application:**  
800, 900, 950, 955 Planters

**Part No. B96489**

**Application:**  
1200 planters

- Kit includes shoe, point, deflector and mounting hardware
- Handy package for tool box or farm shop
- New design with a slotted Z clip for liquid fertilizer capabilities



## Firming Point Kits

**Part No. B94735**  
(Shown)

**Application:**  
800, 900, 950, 955, 1200 planters

- Handy carded two-pack
- Use firming point gauge (sold separately; Part No. 1958225C4) to assess firming point wear
- Heat treated



**Part No. 48030827**  
(Firming Point)

**Part No. 48030831**  
(Firming Point and Shoe)

**Application:** 2150, 2160 planters

## Row Opener Kits

**Part No. B95225**  
(Shown)

**Application:**  
800-955 series planters

**Part No. 47496216**  
(Includes 3.5mm openers)

**Part No. 47498134**  
(Heavy-duty kit, includes 4.5mm openers)

**Application:** 1200 planters

- All kits include opener disks, shoe firming point and hardware







## Closing Disk Kits

**Part No. B95381**  
(Shown)

**Application:**  
800, 900, 950,  
955, 1200 planters

- Kit includes two disk assemblies, dust caps and hardware

**Part No. 48031218**

**Application:** 2150 planters



## Disk Scraper Kits

**Part No. 48030825**  
(LH Row Unit Opener Disk Scraper)

**Part No. 48030826**  
(RH Row Unit Opener Disk Scraper)

**Application:** 2150 planters

## Row Unit Kit

**Part No. 47927274**

**Application:** 2150 planters

## Down-Pressure Spring Kit

**Part No. B95269**

**Application:** 800, 900, 950, 955, 1200 planters

- Kit includes springs and hardware



## Press Wheel Bearing Kit

**Part No. B95270**

**Application:** 800, 900, 950, 955, 1200 planters

- Kit includes press wheel bearing and hardware



## Heavy-Duty Press Wheel Casting and Closing Disk Spring Kit

**Part No. 84606219**

**Application:** 1200 planters

- Ductile cast-iron press wheel with heavy-duty spring
- Genuine Case IH components
- Kit includes press wheel support, heavy-duty closing disk support and mounting hardware



## Closing Disk Spring Guide Kit

**Part No. 84601418**

**Application:** 800, 900, 950, 955, 1200 planters

- Added reinforcement bushings to lower holes and new retention clamps and bolts
- Genuine Case IH components
- Kit includes spring guide, lower pin with cotter pin, retention clamps and hardware



## Case IH Nylon/Steel Gauge Wheel Assemblies

- Patented nylon wheel half for extra strength and to help eliminate soil buildup in wheels
- Deep throat design holds moist soil turned up by the opener to give seed a firm, moist bed
- Higher crown area helps prevent stubble damage while providing maximum flotation
- Internal supports keep tire from bottoming out under heavy loads
- Cross-drilled water pump bearing and bushing do not come loose, preventing wheel loss or damage
- Longer bearing support reduces wheel wobble and adds life



Part No. 87604747

## Carrier Wheel Mud Scraper

**Part No. 47832716 (12N/16RN)**

**Application:** 2150 planter

## Depth Gauge Update Kits

**Part No. 87627347 (RH)**

**Part No. 87627348 (LH)**

**Application:** SDX-30 drills

PART NO.	DESCRIPTION	APPLICATION
87604747	4.5 × 16 assembly	1200 series planters
84236944	2.75 × 16 assembly	1200 series planters
225349A1	4 × 16 assembly	900-955-1200 ASM/PT planters
87673693	3 × 16 assembly	5400/5500 disk drills

## Opener Disk Assemblies (Bolted Flange)

**Part No. B96090**  
(L.H. with Bolts)

**Part No. B96091**  
(R.H. with Bolts)

### Application:

800-955 Cyclo planters

- Earth Metal® disk
- Heavy-duty bearing and flange
- Bolted flange



## Planter Bearing/Flange Kit

**Part No. B95205** (with Bolts)

**Application:** Case IH planters and drills using opener disk assemblies 84389196 and 84389195

- Kit includes dust cap
- Bearing is pressed into the flange for easy installation
- Handy package for tool box or farm shop



## Row Depth Adjustment Kit

**Part No. B96640**

**Application:** 800, 900, 950, 1200 planters

- Easy to adjust
- One-hand operation
- Kit includes handle, hardware and handle retainer clip



## Bearing Caps

**Part No. B96708**  
(12 steel dust caps)

**Part No. B96709**  
(12 rubber dust caps)

### Application:

Fits opener assemblies 84389195 and 84389196 for 800, 900, 950 and 955 planters



## Bolt, Cap, Washer Kits

**Part No. 88715054** (R.H.)

**Part No. 88715055** (L.H.)

### Application:

900, 950, 955 planters

- Opener mounting hardware and hubcap



## Pawl Cover Kit

**Part No. B95369**

### Application:

800 plate planter

## Chain Tensioner Kits

**Part No. 87298627A** (6-row kit)

**Part No. 87298628A** (8-row kit)

### Application:

Early 1200 planters

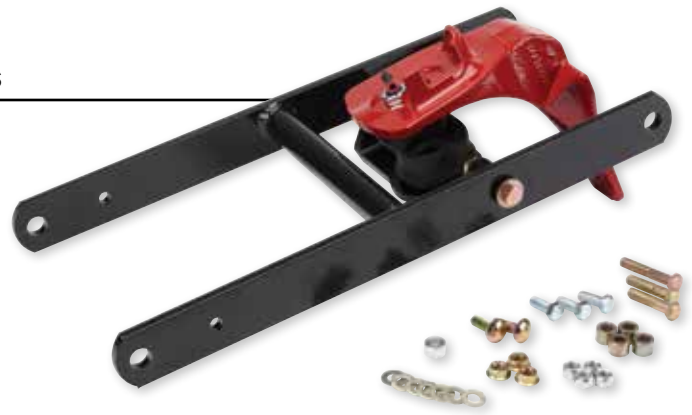
- Improved performance and reliability
- Easier to reach for maintenance on narrow row machines
- Easier replacement of chain tensioner with one bolt—as compared to two snap rings in a hard-to-reach location
- Speed compensator rolls are more reliable for longer life; orientation is held more true for better chain tracking
- Compensator spindle has a large diameter base to hold the roller true
- Fewer parts on both the chain tensioner and speed compensator





## Pneumatic Down-Pressure (PDP) Kit for 1200 Planters

- Basic component kit makes ordering easy
- Infinite down-pressure adjustment from 0-260-lbs.
- Constant pressure for consistent depth control
- Single point adjustment at compressor, with air gauge to monitor pressure
- Individual air spring on each row unit
- Kit available to adjust PDP from the AFS Pro 600 or AFS Pro 700 control centers



## Basic Kit Contents

ROW UNIT KITS	AIR PUMP ASSEMBLY	TUBE AND FITTING KIT
Upper links	Pump assembly	100' 1.4" bulk tubing
Pivot brushings	Pressure gauge	Tees
Pneumatic springs	Tank valve	Plugs
Brackets	Brackets	Tie straps
Hardware	Decal	

## Pneumatic Down-Pressure Kits

PART NO.	DESCRIPTION
84161578	14" row unit linkage kit
84161583	24" row unit linkage kit
84161584	Tubing and fitting kit



Part No. 84161584

## Pneumatic Down-Pressure Assist Spring

**Part No. 84158977**

**Application:** 1200 planters



## Down-Pressure Spring

**Part No. 87459135**

**Application:** 1200 planters

- 20" linkage

## Mini Hopper Enhancement Kits

**Part No. 47532784**

**Part No. 47556260 (Split row)**

**Application:** 1200PT, 1240, 1250, 1260 planters

- An easy-to-assemble, quick-attach snorkel that slows down seeds to prevent clogging; fills automatically for normal field operation and manually for plot planting
- Mini hopper enhancement kit tool sold separately (Part No. 47532734)



## Spring Down-Pressure Kit

**Part No. 87459131**

**Application:** 1200 planters

- 14" linkage



## Wheel Mud Scraper Kits

**Part No. 84159439 (one 10-15 wheel)**

**Part No. 84159440 (one 11-22.5 wheel)**

**Application:** 1250/1255

Early Riser planters

- Includes support, hardware, scraper and instructions
- May require holes to be drilled in the wing wheel standards for mounting



[partstore.caseih.com](http://partstore.caseih.com)

## ADVANCED SEED METER PLATES

### Seed Plates by Crop

Reference the chart below and on the next page to find the right seed plate for your crop and seed size. An eight-row planter requires eight seed plates of the same attachment number to run properly.

CROP TYPE	SEED TYPE	DISK DESIGNATION	SEEDS/LB OR RANGE OF SEEDS/LB	NUMBER OF HOLES	HOLE DIAMETER (MM)	HOLE PROFILE	PART NO.
Corn	Small	2450	>2,000	24	5	N	47900189
	Small	3650	>2,000	36	5	N	47900188
	Small	4850	>2,000	48	5	N	47900186
	Small	4855	2,000-2,400	48	5.5	N	47536776
	Small	3655	2,000-2,400	36	5.5	N	47536733
	Small medium	4855	2,000-2,400	48	5.5	N	47536776
	Small medium	3655	2,000-2,400	36	5.5	N	47536733
	Medium large	4855	2,000-2,400	48	5.5	N	47536776
	Medium large	3655	2,000-2,400	36	5.5	N	47536733
	Large	4855	2,000-2,400	48	5.5	N	47536776
	Large	3655	2,000-2,400	36	5.5	N	47536733
	Extra small plateless	4845	3,175	48	4.5	N	47536744
Low pop narrow row	2455	1,200-2,400	24	5.5	N	47536780	
Popcorn/Sweet Corn	Popcorn, small	4830	3,500-4,600	48	3	N	47536770
	Popcorn, small/medium	4840	2,500-3,500	48	4	N	47536764
	Popcorn, large	4855	2,000-2,400	48	5.5	N	47536776
	Popcorn, large	3655	2,000-2,400	36	5.5	N	47536733
	Sweet corn, small	4835	3,850-4,600	48	3.5	N	47536767
	Sweet corn, medium	4845	2,400-3,100	48	4.5	N	47536744
	Sweet corn, large	4855	2,000-2,400	48	5.5	N	47536776
	Sweet corn, large	3655	2,000-2,400	36	5.5	N	47536733
Soybeans	Medium rate	10045-SB	2,000-3,500	100	4.5	L	47536748
	Low rate/narrow row	8045-SB	2,000-3,500	80	4.5	L	47536746
	Medium rate	10035-SB	3,500-4,500	100	3.5	R	47536749
	Low rate/narrow row, small	8035-SB	3,500-4,500	80	3.5	R	47536747
	High rate	13045	2,000-3,500	130	4.5	L	47536778
	High rate, small	13035-SB	3,500-4,500	130	3.5	R	47536750
Sorghum/Milo	Ultra-low rate	2423	7,000-10,500	24	2.3	N	47536762
	Low/medium rate	8023	16,000-19,000	80	2.3	N	47536761
	High rate	12023	16,000-19,000	120	2.3	N	47536761
Small Edible Bean	Navy	8045	2,300-3,000	80	4.5	N	47536745
Medium Edible Bean	Pinto	6055	1,000-2,300	60	5.5	N	47536759
	Green (Snap)	8045-C	1,400-1,800	80	4.5	P	47536740
Large Edible Bean Kidney	Cranberry	6060	1,000	60	6	P	47536758
	Kidney, large	6060	800-1,000	60	6	P	47536758
Sunflower	Small	2423	7,000-10,500	24	2.3	N	47536762
	Medium	2440	4,000-7,000	24	4	N	47536763
	Large	2455	2,000-4,000	24	5.5	N	47536780
Acid Delinted Cotton	Small	8030	5,000-6,300	80	3	N	47536779
	Medium	8030	4,400-5,000	80	3	N	47536779
	Large	8030	4,200-4,400	80	3	N	47536779
	All sizes	6030	4,200-6,300	60	3	N	47536783
	All sizes	8035-DC	4,200-6,300	80	3.5	S	47536781

CROP TYPE	SEED TYPE	DISK DESIGNATION	SEEDS/LB OR RANGE OF SEEDS/LB	NUMBER OF HOLES	HOLE DIAMETER (MM)	HOLE PROFILE	PART NO.
Acid Delinted High-Residue Cotton	Small	8035	5,000-6,300	80	3.5	N	47536782
	Medium	8035	4,400-5,000	80	3.5	N	47536783
	Large	8035	4,200-4,400	80	3.5	N	47536784
Acid Delinted Cotton Hill Drop	Hill drop 2 seeds	40X2/8030	4,200-6,300	80	3	K	47536753
	Hill drop 3 seeds	20X3/6030	4,200-6,300	60	3	K	47536752
	Hill drop 4 seeds	40X4/8030	4,200-6,300	80	3	K	47536754
Sugar Beets Raw & Pelletized	Small	80175	50,000-58,000	80	1.75	M	47536766
	Small	60175	50,000-58,000	60	1.75	M	47536738
	Medium	80175	38,000-50,000	80	1.75	M	47536766
	Medium	60175	38,000-50,000	60	1.75	M	47536738
	Large	8020	23,000-38,000	80	2	M	47536765
	Large	6020	23,000-38,000	60	2	M	47536737
	Pelleted, small	8020	16,000-23,000	80	2	M	47536765
	Pelleted, small	6020	16,000-23,000	60	2	M	47536737
	Pelleted, medium	8020	12,000-16,000	80	2	M	47536765
	Pelleted, medium	6020	12,000-16,000	60	2	M	47536737
	Pelleted, large	8023	8,000-12,000	80	2.3	N	47536761
	Pelleted, large	6023	8,000-12,000	60	2.3	N	47536736
Peanuts	Small	6060	1,000-1,400	60	6	P	47536758
	Medium	4860	800-1,000	48	6	P	47536769
	Large, Virginia	6065	600-800	60	6.5	P	47536756
	Large, Virginia	4865	600-800	48	6.5	P	47536757
Wheat	All sizes	30015	12,000-18,000	300	1.5	T	47536734
Canola	All sizes	14010	90,000-160,000	140	1	T	47536771
Sesame	All sizes	30010	130,000-170,000	300	1	T	47889941
Blank Seed Disk	—	—	—	—	—	—	47536741
Blank Seed Disk with Groove	—	—	—	—	—	—	47536743

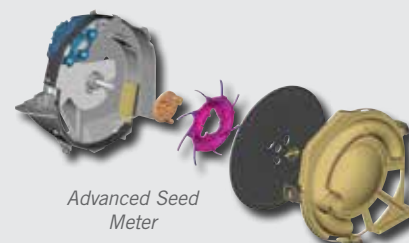
## Case IH Twin Row Planter Seed Plates

CROP TYPE	NUMBER OF CELLS	PART NO.
Soybean	84	73358643
Soybean	168	73358644
Popcorn/Sunflower	24	73358656
Corn Disc Kit - Includes 1 each of round-small and large and flat large	24	73358645



## SEED SPACING

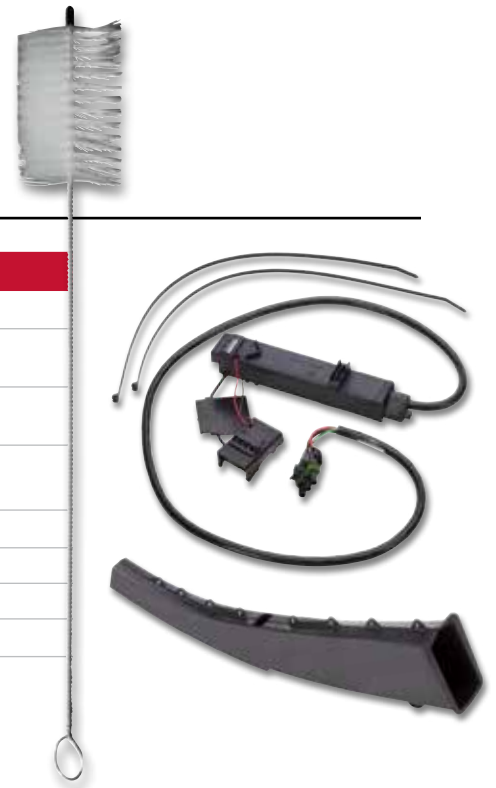
- The Case IH seed meter uses a larger seed plate for slower disk RPMs and more accurate seed placement.
- The Case IH seed meter also uses singulator spools for better singulation across all seed sizes (corn) and accurate population control



## SEED METERING

### Seed Tubes, Sensors and Brushes

PART NO.	DESCRIPTION	APPLICATION
87688051	Seed tube	1200 series planters
84485224	AccuStat sensor	Early Riser 1215, 1225, 1235, 1245, 1255 and 1265 series planters with AFS display
392257A1	Smart seed sensor	1200, 1210, 1220, 1230, 1240, 1250 and 1260 series planters (MY2013 and prior) with AFS display
404831A1	High-rate seed sensor	1200, 1210, 1220, 1230, 1240, 1250 and 1260 series planters with Early Riser II, II or IV monitor
84317050	Seed flow II sensor	Cyclo-Air series planters
1978894C1	High-rate sensor	Cyclo-Air series planters
346290A1	Seed tube brush	20" × 2.5" diameter brush
128817C1	Seed tube brush	12.5" × 1.25" diameter brush



### Agitator Seed Assembly Kit

**Part No. 326924A2**

**Application:** 1200 planter 2003 models and models with singulator assembly (86994218E)



### Singulator Kit

**Part No. 86994218**

**Application:** 1200 planters

- Kit includes new style singulator assembly, seed agitator, hardware and I-sheet singulator



### Singulator Assembly Kit

**Part No. 47375935**

**Application:** 1200 planters

- Provides more precise spool adjustments
- Less maintenance and longer spool life
- Requires new style seed agitator



### Complete Seed Meter (Less Seed Plate)

**Part No. 47692727**

- New meter has new style singulator and other improvements





## Planter Brush Kit

**Part No. 145156C91**

**Application:** 800, 900, 950, 955 planters

- Complete brush assembly



## Brush Kit

**Part No. B95586**

**Application:** 1200 planters

- Kit includes straight brush, curved brush and clips
- Convenience pack for one seed meter



## Latch Kit

**Part No. B95587**

**Application:** 1200 planters

- Kit includes three latches and three latch pins
- Retains cover assembly to motor housing



## Door and Latch Kit

**Part No. B96694**

**Application:** 1200 planters

- Kit includes door chute and latch pin
- Easy to operate: one-hand opening and closing of the door



## Seed Meter Drive Kit

**Part No. B96695**

**Application:** 1200 planters

- Kit includes shaft, bearings and retainer ring
- For 2003 and later meters



## AccuStat-AccuDrive Cable Kit

**Part No. 47815657**

**Application:** 1210 rigid mounted, 1220 rigid trailing, 1230 mounted stacker, 1240 pivot-transport, 1250 front fold trailing (12/16R), 1250 front fold trailing (24R), 1260 front fold trailing

- Converts chain drive seed meter to cable drive
- Eliminates chain and sprocket maintenance
- One kit per row
- Kit requires additional components; see your local dealer



## FERTILIZER/CHEMICAL APPLICATION

### Hinge Kit

**Part No. B94741**

**Application:** 800, 900, 950, 955 planters, seed and chemical hoppers

- Kit includes all components and hardware in one package



### Roller, Feed

**Part No. B94740**

**Application:** 800, 900, 950, 955, 1200 planters

- Granular chemical



### Earth Metal® Double Disk Fertilizer Opener

**Part No. 141464C92**

**Application:** 800 – 1200 planters



### Liquid Fertilizer EVA Tubing

PART NO.	DESCRIPTION
25630601	3/8" x 166'
25630602	3/8" x 250'
25630801	1/2" x 166'



### Fertilizer Knives

**Part No. 1344517C2** (Liquid)

**Part No. 108120A1** (Dry)

**Application:**

All Case IH planters

- Cast-chromium alloy knives for increased life and reduced service time



### Earth Metal® Coulters

Trust the wide selection of planter coulters from your Case IH dealer—many of which are made from our proprietary, long-lasting Earth Metal steel for quality you can trust.

PART NO.	DESCRIPTION
321165A2	17" rippled
431542A1	14.7" 25-wave
130800A2	14.3" 8-wave
87584040	15" smooth



## CHAINS



### Planter Chains for 1200 Case IH ASM Planter

CATALOG REF NO.	STANDARD CHAIN PART NO.	NICKEL CHAIN PART NO.	DESCRIPTION	CHAIN ASSEMBLY (INCLUDES ONE CONNECTOR)
—	84373804P	—	Row unit meter drive	#41 – 120 links
—	84485909P	84485909N	Crossover drive 8R-12R stacker	#40 – 89 links
—	84485910P	—	Crossover drive 8R-12R stacker	#40 – 75 links
—	84485911P	84485911N	Crossover drive 8R-12R stacker	#40 – 73 links
—	84485912P	84485912N	Crossover drive 8R-12R stacker	#40 – 67 links
—	87417442P	—	ASM meter drive chain-1200PT	#41 – 160 links
—	87504325P	—	Liquid fertilizer piston pump drive on 6R-8R ridge trailing	#2040 – 96 links
—	84485911P	84485911N	Drive chain on 8R and 12R mounted stacker	#40 – 74 links
—	84485912P	84485912N	Drive chain on 8R and 12R mounted stacker	#40 – 68 links
—	84485909P	84485909N	Drive chain on 8R and 12R mounted stacker	#40 – 91 links
—	84485910P	84485910N	Drive chain on 8R and 12R mounted stacker	#40 – 77 links
—	1277739C91P	—	Drive wheel chain on 16RN mechanical drive	#2050 – 46 links
—	1277740C91P	—	Drive wheel chain on LH 6RN, 8RN, 8RW, 12R, 16RN mechanical drive	#2050 – 56 links
—	137465C92P	—	Secondary fertilizer drive	#2040 – 58 links
—	149569C3P	—	Squeeze pump drive	#2040 – 101 links
332416A1	332416A1P	—	Transmission drive chain, with 3-piece coupled drive shaft	#40 – 95 links
—	332417A2P	—	Transmission drive chain, with 3-piece coupled drive shaft	#40 – 116 links
336670A3	336670A3P	—	Crossover drive-mounted stacker	#41 – 58 links
—	352954A1P	—	Row unit with standard linkage	#41 – 144 links
—	448252A1P	—	Crossover drive chain on 12RW mounted stacker	#40 – 62 links
—	448253A1P	—	Crossover drive chain on 8RW and 12RN mounted stacker	#40 – 59 links

### Planter Chains for Early Riser 1210-1220

CATALOG REF NO.	STANDARD CHAIN PART NO.	NICKEL CHAIN PART NO.	DESCRIPTION	CHAIN ASSEMBLY (INCLUDES ONE CONNECTOR)
—	87504325P	—	Liquid fertilizer piston pump drive on 6R-8R ridge trailing	#2040 – 96 links
—	84425475P	84425475N	Mechanical transmission drive	#50 – 90 links
87739135	84425476P	84425476N	Transmission drive chain	#50 – 78 links
—	1277739C91P	—	Drive wheel chain on 16RN mechanical drive	#2050 – 46 links
—	1277740C91P	—	Drive wheel chain on LH 6RN, 8RN, 8RW, 12R, 16RN mechanical drive	#2050 – 56 links
—	137465C92P	—	Secondary fertilizer drive	#2040 – 58 links
332416A1	332416A1P	—	Transmission drive chain, with 3-piece coupled drive shaft	#40 – 95 links
—	332417A2P	—	Transmission drive chain, with 3-piece coupled drive shaft	#40 – 116 links

**USE CHAIN AND CABLE LUBRICANT TO LUBRICATE DRIVE CHAINS. SEE PAGE 38 FOR MORE DETAILS.**

## CHAINS



### Planter Chains for Early Riser 1230

CATALOG REF NO.	STANDARD CHAIN PART NO.	NICKEL CHAIN PART NO.	DESCRIPTION	CHAIN ASSEMBLY (INCLUDES ONE CONNECTOR)
—	84373804P	—	Row unit meter drive	#41 – 120 links
—	84485909P	84485909N	Crossover drive 8R-12R stacker	#40 – 89 links
—	84485910P	—	Crossover drive 8R-12R stacker	#40 – 75 links
—	84485911P	84485911N	Crossover drive 8R-12R Stacker	#40 – 73 links
—	84485912P	84485912N	Crossover drive 8R-12R stacker	#40 – 67 links
—	84485911P	84485911N	Drive chain on 8R and 12R mounted stacker	#40 – 74 links
—	84485912P	84485912N	Drive chain on 8R and 12R mounted stacker	#40 – 68 links
—	84485909P	84485909N	Drive chain on 8R and 12R mounted stacker	#40 – 91 links
—	84485910P	84485910N	Drive chain on 8R and 12R mounted stacker	#40 – 77 links
—	84425475P	84425475N	Mechanical transmission drive	#50 – 90 links
87739135	84425476P	84425476N	Transmission drive chain	#50 – 78 links
—	1277739C91P	—	Drive wheel chain on 16RN mechanical drive	#2050 – 46 links
—	1277740C91P	—	Drive wheel chain on LH 6RN, 8RN, 8RW, 12R, 16RN mechanical drive	#2050 – 56 links
332416A1	332416A1P	—	Transmission drive chain, with 3-piece coupled drive shaft	#40 – 95 links
—	332417A2P	—	Transmission drive chain, with 3-piece coupled drive shaft	#40 – 116 links
—	352954A1P	—	Row unit with standard linkage	#41 – 144 links
—	448252A1P	—	Crossover drive chain on 12RW mounted stacker	#40 – 62 links
—	448253A1P	—	Crossover drive chain on 8RW and 12RN mounted stacker	#40 – 59 links

### Planter Chains for Early Riser 1240

CATALOG REF NO.	STANDARD CHAIN PART NO.	NICKEL CHAIN PART NO.	DESCRIPTION	CHAIN ASSEMBLY (INCLUDES ONE CONNECTOR)
—	84373804P	—	Row unit meter drive	#41 – 120 links
—	84387534P	84387534N	Hydraulic seed drive chain on 12R and 16R	#40 – 84 links
—	87417442P	—	ASM meter drive chain 1200PT	#41 – 160 links
—	352954A1P	—	Row unit with standard linkage	#41 – 144 links

### Planter Chains for Early Riser 1245

CATALOG REF NO.	STANDARD CHAIN PART NO.	NICKEL CHAIN PART NO.	DESCRIPTION	CHAIN ASSEMBLY (INCLUDES ONE CONNECTOR)
—	84373804P	—	Row unit meter drive	#41 – 120 links
—	84387534P	84387534N	Hydraulic seed drive chain on 12R and 16R	#40 – 84 links

## CHAINS



### Planter Chains for Early Riser 1250

CATALOG REF NO.	STANDARD CHAIN PART NO.	NICKEL CHAIN PART NO.	DESCRIPTION	CHAIN ASSEMBLY (INCLUDES ONE CONNECTOR)
—	84370996P	84370996N	Hydraulic drive transmission chain on 24R	#50 – 62 links
—	84373804P	—	Row unit meter drive	#41 – 120 links
—	84387533P	84387533N	Meter system drive crossover chain for 12R and 16R	#40 – 72 links
—	84387534P	84387534N	Hydraulic seed drive chain on 12R and 16R	#40 – 84 links
—	84393494P	84393494N	Crossover drive 24R	#40 – 69 links
87637911	84393498P	—	Mechanical transmission reverse chain on 24R	#50 – 98 links
87637913	84393499P	84393499N	Mechanical transmission drive chain on 24R	#50 – 84 links
87637914	84393497P	84393497N	Mechanical transmission drive chain on 24R	#50 – 82 links
87637915	84395718P	84395718N	Mechanical transmission return chain on 24R	#50 – 154 links
87637916	84395719P	84395719N	Row unit transmission chain on 24R	#50 – 70 links
87672339	84393493P	84393493N	Crossover drive chain on 24R mechanical drive	#50 – 56 links
87690913	84393493P	84393493N	Drive chain on 12R and 16R upper mechanical drive	#50 – 178 links
87690914	84393496P	84393496N	Drive chain 12R and 16R upper mechanical drive	#40 – 104 links
—	352954A1P	—	Row unit with standard linkage	#41 – 144 links
—	73341696P	—	1250 hydraulic transmission drive before MY 2012	#50 – 49 links
—	73341697P	—	1250 hydraulic transmission drive before MY 2012	#50 – 56 links

### Planter Chains for Early Riser 1255—12-16 Row

CATALOG REF NO.	STANDARD CHAIN PART NO.	NICKEL CHAIN PART NO.	DESCRIPTION	CHAIN ASSEMBLY (INCLUDES ONE CONNECTOR)
—	84373804P	—	Row unit meter drive	#41 – 120 links
—	84387533P	84387533N	Meter system drive crossover chain for 12R and 16R	#40 – 72 links
—	84387534P	84387534N	Hydraulic seed drive chain on 12R and 16R	#40 – 84 links

### Planter Chains for Early Riser 1255—24 Row

CATALOG REF NO.	STANDARD CHAIN PART NO.	NICKEL CHAIN PART NO.	DESCRIPTION	CHAIN ASSEMBLY (INCLUDES ONE CONNECTOR)
—	84370996P	84370996N	Hydraulic drive transmission chain on 24R	#50 – 62 links
—	84373804P	—	Row unit meter drive	#41 – 120 links
—	84393494P	84393494N	Crossover drive 24R	#40 – 69 links

### Planter Chains for Early Riser 1260

CATALOG REF NO.	STANDARD CHAIN PART NO.	NICKEL CHAIN PART NO.	DESCRIPTION	CHAIN ASSEMBLY (INCLUDES ONE CONNECTOR)
—	84423899P	84423899N	Soil preparation seed drive chain on center 66'	#40 – 90 links
—	84423900P	84423900N	Soil preparation seed drive chain on middle 90'	#40 – 124 links
—	84423901P	84423901N	Outer drive	#40 – 60 links
—	84525967P	84525967N	Soil preparation seed drive chain 50'	#50 – 86 links
—	352954A1P	—	Row unit with standard linkage	#41 – 144 links

## MAXIMIZE YOUR YIELD POTENTIAL WITH PRECISION PLANTING

Increase the precision of your planter this spring to improve yields this fall! Added to the Case IH Early Riser planter, these optional Precision Planting components create a planter that fits your unique operation. Each Precision Planting kit features agronomic design options that customize individual row units to function like independent planters. These products offer clear, intuitive controls, rapid update rates and hardware/software solutions.

Available Precision Planting kits:

- DeltaForce Hydraulic Active Downforce Control
- 20/20 SeedSense Planting Monitor
- vSet Meter and vDrive™ Electric Drive System
- CleanSweep Dual-Action Air Cylinder

**NOW  
AVAILABLE**  
for Case IH, John Deere  
and Kinze planters!

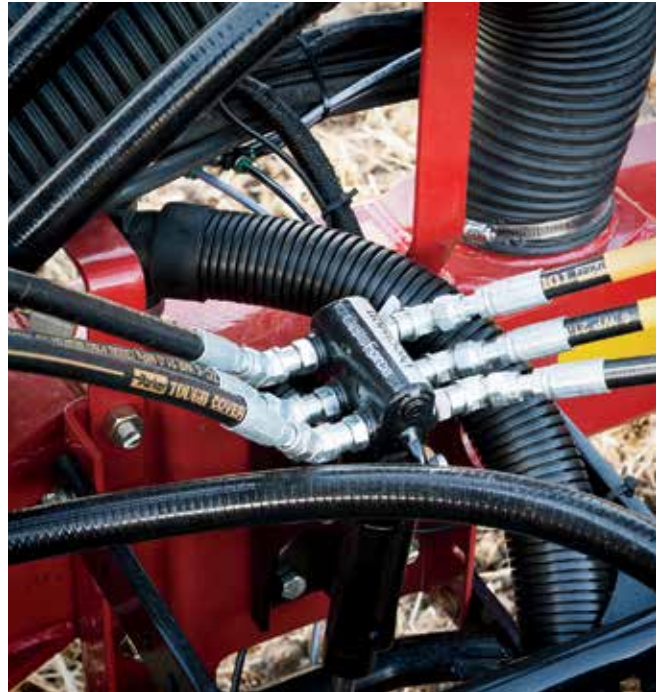
*John Deere is a registered trademark of Deere & Company.  
Kinze is a registered trademark of Kinze Manufacturing, Inc.*

## DELTA FORCE HYDRAULIC ACTIVE DOWNFORCE CONTROL

Maintaining proper seed depth is essential for maximum yields. Too much weight on your row units can lead to compacted roots. Without enough weight, seeds remain too close to the surface. When down force matches the field conditions, you maintain the correct depth and create the perfect seed environment for maximum yield.

DeltaForce automatically adjusts weight with extreme precision for each individual row. When one row encounters conditions different than another, each will adjust independently. So, row by row, foot by foot, seeds are dropped exactly where you want them, producing an environment that fosters uniform germination, optimum growth and maximum yield.

DeltaForce works with 20/20 SeedSense and replaces the springs or air bags on your planter. It includes hydraulic cylinders harnessed to the cab, plus a weight pin that sends data to SeedSense which, in turn, controls the cylinders—and your down force.



## 20/20 SEEDSENSE PLANTING MONITOR

You can make a real difference during planting if you pay attention to your planter. More precise than any other monitor, 20/20 SeedSense is easy to use, with a color-coded touchscreen display that enables you to seed precisely, maintain depth, avoid compaction and troubleshoot mechanical problems. Just tap the screen to see row-by-row details, so you can plant with confidence.

### **Issue Alerts At A Glance:**

- **Singulation:** See the percentage of skips and multiples for the entire planter and each individual row.
- **DownForce:** Watch ground contact to be sure you're planting at full depth.
- **Seed Spacing:** Monitor the percentage of seed spaced within the limits you set.
- **Hex Shaft:** Is your ground drive transmission slipping? One glance tells you.
- **Loss/Acre:** See relative yield loss from the combined errors.
- **Row Unit Ride:** Reports bounce and vibration of the row unit, letting you know if you need to slow down.



## vSET METER AND vDRIVE ELECTRIC DRIVE SYSTEM

Easily master planting population control and get consistent seed release, every time, with the vSet and vDrive combination. vSet features a floating five-lobed singulator to ensure one seed per hole and a flat disk with specially designed agitation pockets that churn constantly, helping the disk load completely. The seed extractor has a rolling wheel that keeps fragments from plugging holes in the disk.

Ensure your planter performs every task at peak performance by pairing the vSet meters with the integrated vDrive control system. The row-by-row control and accuracy of vDrive delivers precisely planted headlands, high-definition population reporting, and the ability to plant male and female seed corn plants in the same pass. Plus, instead of planting too many seeds on the inside of a curve and too few on the outside, vDrive independently maintains consistent seed population in each row.

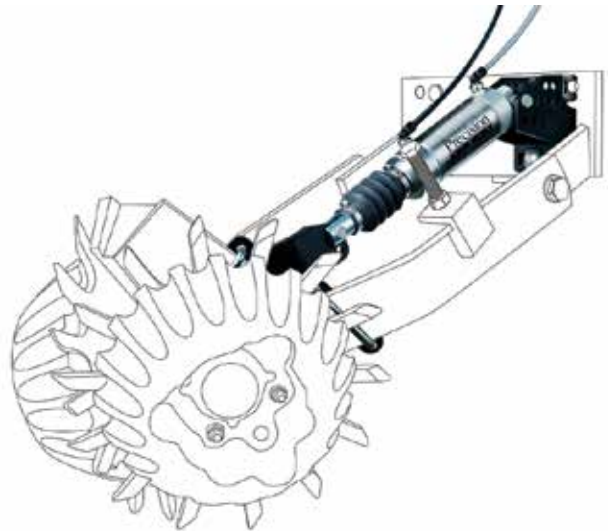






## CLEANSWEEP DUAL-ACTION AIR CYLINDER

Uniform germination and higher plant counts depend on clean rows. However, row cleaners can be difficult to manage because they need to be set precisely and changed frequently. But now, CleanSweep does all that work for you. It sets row cleaners in exactly the right position—moving the residue without moving the soil—and continuously adjusts them as field conditions change. You can even raise the row cleaners out of the way when they're not in use.



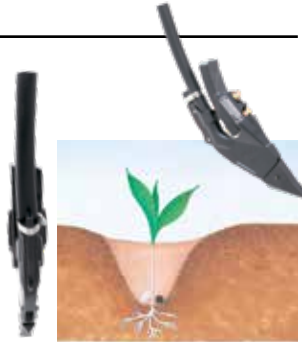
## STEALTH OPENERS

The Stealth opener is a modular system that adds versatility to your row seeding. A choice of tips or attachments mount to the main body, and replaceable tips promote long life and customization.

- **Single-Shoot:** Stealth openers use replaceable tips that work for both narrow-row and spread-row seeding styles.
- **Double-Shoot:** Stealth double-shoot attachments allow one-pass placement of seed and fertilizer. Seed/fertilizer separation prevents seedling damage.

### Knife Tips

- Low soil disturbance
- Very narrow spread of 7/8" to 1"
- For use with any press wheel
- Heavy-duty, gumbo or carbide tips match soil condition



PART NO.		DESCRIPTION
STANDARD	CARBIDE	
87506287	87505195	Gumbo
87506283	87506293	Standard

### Spread Tips

- Places seed 1" above and 1" beside the fertilizer
- Wing forces soil into the fertilizer trench to provide separation from seed
- Can be used with all press wheels
- Available in standard or long-life carbide



PART NO.		DESCRIPTION
STANDARD	CARBIDE	
84193957	84193966	3" spread
84193961	84193981	4" spread
87506290	87563695	5" spread

### Side Band

- Designed for low-disturbance seeding
- Wider product spread allows more fertilizer to be placed with the seed
- Spread tips are available in 3", 4" or 5" sizes
- For use with press wheels that match row widths



PART NO.		DESCRIPTION
STANDARD	CARBIDE	
87506407	22846	LH side band
87506409	22847	RH side band

### Paired Row

- Seed is placed 1" above and 1" to 2-1/2" on both sides of the fertilizer
- 3" size available in HS format for heavy soils and gumbo, and in LS format for light soils and sandy loam
- 3", 4" and 5" sizes available in carbide for extended wear that helps to maintain integrity of seedbed over the full life of the opener; designed to force soil into the fertilizer trench, providing separation from the seed
- For use with press wheels that match row widths



PART NO.		DESCRIPTION
STANDARD	CARBIDE	
87506291	87506295	3" paired row
87506292	N/A	3" paired row light soil
87506261	22848	4" paired row
87506294	22626\C	5" paired row

### Adapter Bodies

PART NO.	DESCRIPTION
GD-847V3	Standard cast body
87418698	Edge-on shank body
BG-103V2	Quick-change knock-on body*



Part No. 87418698

\*Requires 9921 wedge

## Precision Knife Openers

**Part No. 47433844 (L.H.)**

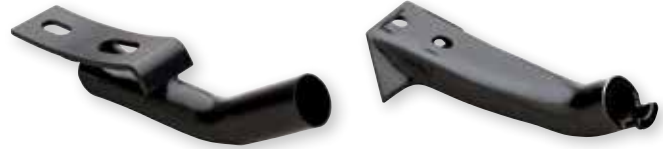
**Part No. 47433845 (R.H.)**

- Ultra-low-disturbance knife openers with carbide tip and hard-surfacing for placement of seed and dry or liquid fertilizer
- Provides 1-7/8" lateral separation and 7/8" vertical



## Seed Boots

PART NO.	DESCRIPTION	APPLICATION
1023510	Seed boot	Field cultivators
87506257	Cast seed boot	Field cultivators
87506234	Cast seed boot	Chisel plows
AS-858	Wide banding boot	Chisel plows and field cultivators
AS-859	Narrow banding boot	Chisel plows and field cultivators



## Barton Opener Components

PART NO.	DESCRIPTION
87508093	18" Earth Metal® opener disk
21629	12" Coulter
21026	4.5" × 16" gauge wheel assembly
87673673	4" × 14" press wheel assembly

## L.D. SWEEP OPTIONS

PART NO.	ECONOMICAL IMPORT OPTION PART NO.	DESCRIPTION
1032199	1032199N	6" sweep
87298811	N/A	6" hard-faced sweep
350232A1	N/A	6" sweep with chrome edge
1027915	1027915N	11" sweep
87298812	N/A	11" hard-faced sweep
350233A1	N/A	11" sweep with chrome edge
1033379	1033379N	13" sweep
87298813	N/A	13" hard-faced sweep
350234A1	N/A	13" sweep with chrome edge



## L.D. Seed Boot Deflector Kit

**Part No. B94635**

**Application:** L.D. seed boot assembly

- Components to replace deflectors



# AIR HOE DRILLS



## Furrow Opener Points

**Part No. 818085C2** (3" shovel)

**Part No. 818083C2** (5" shovel)

**Application:** 7100, 7200, 8500 drills



Part No. 818085C2

Part No. 818083C2

## Eagle Beak Point in Bulk

**Part No. 1279757C1B**

**Application:**  
7100, 7200,  
8500 drills



## Anderson Opener Assemblies

PART NO.	DESCRIPTION
312945A1	Anderson opener AE-12 day (12" drill edge-on – dry fertilizer)
1033282	Chrome weld-on replacement point for Anderson openers

Part No.  
1033282



## Header Stand Elbows

PART NO.	DESCRIPTION
GP-103	Standard elbow
GP-102	High-abrasion elbow



## CHOOSE YOUR SHANK STYLES AND TRIPS

The rugged C-shank and trip design allow for use with a wide range of opener styles. Choose 350-lb. trips for most soil types, or 550-lb. trips for rugged conditions and double-shoot applications. Mount an optional one-bar 1/2" tine harrow behind the rear shanks for added leveling and row closing.

### Shanks

PART NO.	DESCRIPTION
87506241	50°, no offset
87506243	50°, 2-1/4" left offset
87506242	50°, 2-1/4" right offset
87500716	50°, 3-1/8" left offset
87500715	50°, 3-1/8" right offset
87506280	47°, no offset
87506281	47°, 2-1/4" left offset
87506282	47°, 2-1/4" left offset

### Trips

PART NO.	DESCRIPTION
TP-351A	350-lb. trip
87686090	550-lb. trip



Part No.  
133480A1



## All-Makes Earth Metal® Opener Disks

PART NO.	DESCRIPTION	APPLICATION	DIAMETER		THICKNESS		BOLT HOLES	BOLT CIRCLE		CENTER HOLE DIA.	
			IN	MM	IN	MM	PART NO.	IN	MM	IN	MM
73343551	Flat coulter with countersunk bolt holes	Bourgault disk drills	20.47	520	0.197	5	4	5	127	3.64	92.5
73343553	Flat coulter		20.47	520	0.177	4.5	4	5	127	3.65	92.9
73343554	Flat coulter		18.38	467	0.177	4.5	4	5	127	3.65	92.9
133480A1	Flat coulter	John Deere 1690, 1850, 1860 and 1890 air seeders	18.1	460	0.197	5	4	4.4	111.5	3.03	77

## All-Makes Bearing Kits

**Part No. 87440810**

**Application:** Bourgault Mid Row Banders®

**Part No. 419594A1**

**Application:** John Deere 1690, 1850, 1860 and 1890 air seeders



Part No. 87440810



Part No. 419594A1

## PACKING AND LEVELING KITS

### Axle Pivot Pin Kit

**Part No. B94350A**

**Application:** Concord drills

- Package includes all original equipment components
- Save time and money by having all components and hardware included in one package
- Use kit for pre-season maintenance to promote uptime during the seeding season



### Bearing Kit – Disk Leveler

**Part No. B94619 (with bolts)**

**Application:** Disk levelers – disk assembly 1030418

- Components necessary to replace bearing in disk assembly 1030418



### Rub Pad Kit

**Part No. B94688**

**Application:** Concord air till drills (10" and 12" drills) and narrow transport walking beam assembly

- Kit includes two pads, Part No. 1026129



### Rub Pad Kit

**Part No. B94689**

**Application:** Concord air till drills walk beam assembly

- Nylatron for longer service life
- Recommended for abrasive soil conditions
- Kit includes two pads, Part No. 1026499



### Rub Pad Kit

**Part No. B94690**

**Application:** Concord air drills (outer model drill)

- Kit includes four pads, Part No. 1023363



[partstore.caseih.com](http://partstore.caseih.com)



## Bearing Kit

**Part No. B94348A**

**Application:** Concord drills using hub 351044A1

- Maintenance kit for Concord packer wheels
- Save time and money by having all components and hardware in one package



## Four-Ply Packer Wheel

**Part No. 47357837**

**Application:** 800 precision drills

- 4.8" x 8", smooth wheel



## Complete Walking Beam Assemblies

**Part No. 87421662** (10" spacing)

**Part No. 87421664** (12" spacing)

**Application:** ATX700, ATX10, 700

- Packer walking beam assembly



## Flat-Faced Packer Tire

**Part No. 290719A1**

(includes tire only, shown mounted)

- Preferred for its ability to leave the field exceptionally smooth
- 6.5" x 15"
- Pack the entire width of the ribbon or row
- Sustains minimal stubble damage due to the thicker rubber on the flat face and the four-ply side



## SEED METERS

### Case IH Air Cart Metering Systems Ensure Accurate Seeding, Every Time.

What crops do you seed now? How will that change next year, or three years from now? Whatever your plan, a range of meter roller designs provide you with accurate metering and efficient operation. Meters accommodate products ranging in size from the smallest forage seed to the largest bean—inoculated, treated or not—plus a wide range of fertilizer applications.

Select from these roller options:



**EXTRA FINE:** for micronutrients or very small seeds such as alfalfa, grass, canola and grain sorghum, at very low rates

**Part No. 9825**



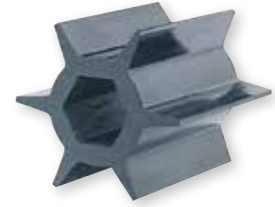
**FINE:** for wheat, barley, oats, flax, millet and moderate rates of fertilizer

**Part No. 7245**



**COARSE:** for solid-seeding, larger crops such as corn and beans at high rates

**Part No. 7246**



**EXTRA COARSE:** for very large, fragile seeds such as peas and large beans, and high rates of fertilizer

**Part No. 51200058**

## METER ROLLERS

Complete roller assemblies for quick and economical service.

NO. OF RUNS	PART NO.			
	EXTRA FINE	FINE	COARSE	EXTRA COARSE
2	GL-512S.1	GL-522S.1	GL-532S.1	GL-992SV1
3	GL-513S.1	GL-523S.1	GL-533S.1	GL-993SV1
4	GL-514S.1	GL-524S.1	GL-534S.1	GL-994SV1
5	GL-515S.1	GL-525S.1	GL-535S.1	GL-995SV1
6	GL-516S.1	GL-526S.1	GL-536S.1	GL-996SV1
7	GL-563SV1	—	GL-537SV1	GL-997SV1
8	GL-518S.1	GL-528S.1	GL-538S.1	GL-998SV1

### DIA Roller Fine Meter

**Part No. 48097501**

Attachment includes one of each of the following:

- Meter roller
- Locking knob
- Cartridge brace
- Half width cartridge

### Meter Roller Assembly Medium

**Part No. 48097502**

Attachment includes one of each of the following:

- Meter roller
- Locking knob
- Cartridge brace
- Half width cartridge



## Bottom Wiper Kit

**Part No. B94615** (product meter)

**Application:** Concord air systems bottom product meter

- Product meter includes rubber wiper, support and hardware
- Seed meter includes rubber wiper, strip and hardware



Part No. B94615

## Bearing Kit

**Part No. B94629**

**Application:**

Air system driveline

- Cart maintenance kit promotes uptime service during seeding season



## Plate Seal Assembly— Metering Rolls

**Part No. 1027945E**

**Application:** Concord air

systems 1100, 2000, 2300, 2400, 3400, 3503



## Metering Roll Seal Kit

**Part No. 1030624E**

**Application:** Concord

air systems 1100, 2000, 2300, 2400, 3400, 3503



## Seal Kit— Flow Control Plate

**Part No. B94618**

**Application:** Concord

air systems 1100, 2000, 2300, 2400, 3503

- Kit includes two outer seals and one inner seal



## CASTER AND WHEEL BEARING KITS

### Caster Wheel Bearing Kit

**Part No. B94631**

**Application:** All wings and mainframes on drills less than 44'

- All components to replace bearings in caster wheel



### Caster Wheel Bearing Kit

**Part No. B94632**

**Application:** Heavy-duty mainframes – +44' drills

- All components to replace bearings in caster wheel



### Front Caster Bearing Kit

**Part No. 6752**

**Application:** Precision and ADX air carts

- Contains bearings, seal, cap, washers and pin for castor pivot



### Cart Axle—Bearing Kit

**Part No. B94630**

**Application:** Carts 2000, 2300, 2400, 3400, 3503

- Kit includes bearings, seals, cap and hardware



## MAINTENANCE KITS

### Top Door Gasket Kit

**Part No. B94628**

**Application:** 1100, 2000, 2300, 2400, 3000, 3400, 3503 Concord air systems

- Gaskets and glue to repair seal on top door



### Lombardini Filter Maintenance Kit

**Part No. B94675**

**Application:** Concord air systems

- Kit contains fuel and oil filter



## Gauge Wheel Assemblies

PART NO.	SIZE	TYPE	APPLICATION
87673693	3 × 16	Gauge	5400/5500
47651825	1 × 12	Press	5400/5500
87645554	3 × 13	Press	5300/5400/5500
228886A2	2.75 × 16	Gauge	5400/5500 Soybean Special



Part No. 87673693

## Scraper Assemblies

Inside:

**Part No. 843364C92C**  
(pack of 2)

**Part No. 843364C92B**  
(bulk pack, 25 pieces)

Outside:

**Part No. 819373C1**

**Application:** for drill models 510, 620, 5100, 5300, 5400, 6200

- Complete assembly
- Heavy-duty cast scraper blades



## Drill Bearing/Flange Kit with Bolts

**Part No. B95204**

**Application:** Case IH grain drills using opener disk assembly Part No. 603020R92 (510, 5100, 5200, 620, 6200)

- Components necessary to replace bearing/flange in disk assembly 603020R92; kit also includes dust cap
- Bearing is pressed into the flange for easy installation
- Handy package for tool box or farm shop



## Drill Bearing Kits

**Part No. B94353** (with Bolts)

**Part No. B94352** (with Rivets)

**Application:** Case IH grain drills using opener disk assembly Part No. 603020R92 (510, 5100, 5200, 620, 6200)

- Components necessary to replace bearing



Part No. B94353  
with Bolts



Part No. B94352  
with Rivets

## Rotary Scraper

**Part No. 100641A1**

**Application:** for drill models 5400, 5500

- Recommended in abrasive or sticky soil conditions



## Drill Drag Chain

**Part No. 87299504**

Fits most standard seed drills



# SINGLE DISK DRILLS

## Earth Metal® Opener Disks

PART NO.	APPLICATION	DESCRIPTION
87488385	500/500T	18" × 5 mm
306001A1	SDX30/40	22.5" × 6.5 mm

## Gauge Wheel Assemblies

PART NO.	SIZE	TYPE	APPLICATION
87693254	4" × 12"	Press wheel	500/500T
87673893	3" × 16"	Gauge wheel	500/500T
21618	4.5" × 16"	Gauge wheel	500/500T
87604747	4.5" × 16"	Gauge wheel	SDX
87695406	1" × 12"	Press wheel	SDX
306145A1	9"	Seed lock	SDX

## Disk Opener Bearing and Seal Kit

Part No. B96347

Application: SDX-30 drills



## Seed Meters

PART NO.	DESCRIPTION	CROP TYPE
84389793	Extra-fine roller	Sorghum/milo, canola
84389792	Fine roller	Flax, sorghum/milo
84389771	Coarse roller	Barley, oats, rice, soybeans, wheat

## Service Spindle Assemblies

PART NO.	DESCRIPTION
84327548	Double castor and fixed rear wheel
GD-161A	Single castor
84472211	High-flotation double castor and rear wing
306145A1	SDX

## Flexible Clean-Out Hose

Part No. 47710042

Application: 500/500T Disk Drills

- Clean out the bulk seed tank quicker, easier and faster with no mess
- Seed flows to a container located on the ground—reducing seed spillage and saving money
- “One-man” clean-out operation by attaching the tapered fitting end of the flexible hose to the bulk seed tank steel clean-out tube
- One tube for all four clean-out ports on the bottom of the bulk seed tank



## RAIN AND DEBRIS KITS

Our clear rain and debris kit protects seed meters from the elements—shielding the meter area from rain, overspray during power-washing, and tire spray during transport. It also keeps dirt clods, crop residue, gravel and small stones from getting into the meter rolls. Two rain and debris kits are required per disk drill.

PART NO.	DESCRIPTION
47446028	25' and 30' kit
47446031	40' kit





# YOUR EQUIPMENT'S LIFEBLOODS.

## SIMPLIFY YOUR SHED WITH FLUIDS FOR EVERY APPLICATION.

There's only one line of fluids you need in your shed, and it's compatible with all equipment brands and engine types—both legacy and Tier 4. We've tested these engine oils, transmission-hydraulic fluids and coolants against our most rigorous product standards—and they're designed to promote maximum performance in even the toughest conditions.

Fluids are the lifebloods of your equipment—don't jeopardize your investment with generic brands.



©2018 CNH Industrial America LLC. All rights reserved. Case IH is a trademark registered in the United States and many other countries, owned by or licensed to CNH Industrial N.V., its subsidiaries or affiliates. CNH Industrial Genuine Parts is a trademark in the United States and many other countries, owned by or licensed to CNH Industrial N.V., its subsidiaries or affiliates. Any trademarks referred to herein, in association with goods and/or services of companies other than CNH Industrial America LLC, are the property of those respective companies. [www.caseih.com](http://www.caseih.com)

## Non-Stick Graphite Lubricant

Spray, brush or roll non-stick graphite lubricants onto any metal or wood surface to reduce sliding friction on chains and sprockets, hitches, overhead door tracks, winches, and hinges. This lubricant also works for the seed drum seal wearing ring and marker alternator of Cyclo planters, and as a surface conditioner on gravity boxes, hoppers, chutes, moldboards, planters and markers, forage boxes and wagon beds.



NO.	DESCRIPTION
407408R1	14 oz. Aerosol – No. 3
547596R1	1 qt. (.95 L) – No. 1
1131916R1	1 gal. (3.79 L) – No. 1

## Tilcoat

Tilcoat is a specialized oil-based coating designed to protect valuable field equipment during non-use periods.

- Formulated to release from tillage tools upon their insertion and use in the ground
- Lead-free formula that dries to a non-toxic film and provides short-term protection
- Fast scouring, resists rust and easy to apply
- Suggested applications include tillage equipment, moldboards, plow shares, disks, sweeps and shovels



PART NO.	DESCRIPTION
1132221N	12 oz. (340 g)
991049R2	1 qt. (946 ml)
1131548R2	1 gal. (3.78 L)

## Talc/Graphite Seed Lubricant

Iron Gard® seed lubricant is available for any type of planter, whether gravity or airflow. The proper use of seed lubricant prevents bridging in the hopper and reduces wear on moving parts in the seed meter.

PART NO.	DESCRIPTION	APPLICATIONS
73341461	1-lb. 100% graphite	All makes
73341463	1-lb. 80% talc 20% graphite	All makes
407486R1	1-lb. 100% graphite fine particle size	Cyclo planters
73340733	8-lb. 100% graphite fine particle size	Cyclo planters
73340734	1-lb. 50% talc 50% graphite fine particle size	Case IH ASM planters
73340370	8-lb. 50% talc 50% graphite fine particle size	Case IH ASM planters
73340918	Dispensing cap	8-lb. container

## Penetrating Oil

**Part No. B505502 – 12 oz (340 g)**

- Loosens rusted parts
- Prevents corrosion on tools and other parts
- Dries out wet engine parts
- Stops binding and squeaks



## Chain and Cable Lube

**Part No. B505500 – 12 oz (340 g)**

- For use on construction and agricultural equipment
- Helps protect against rust and corrosion
- Fast penetrating action
- Reduces chain wear and increases life of chain and cables
- Resists high-temperature breakdown
- Heavy viscosity reduces throw-off



## GREASE

### Multi-Purpose Grease 251H EP (MAT 3550-A)

251H EP is an NLGI No. 2, lithium-soap, extreme-pressure grease for wheel bearings, universal joints, spline shafts, water pump bearings, chassis and general lubrication.

PART NO.	DESCRIPTION	SIZE
132096A1	Grease 251H EP	Tube/14 oz.
87298944	Grease 251H EP	35 lbs./15.9 L
87298945	Grease 251H EP	120 lbs./54.5 L



### Moly Grease GR-75 (MAT 3550-C)

GR-75MD is a specially formulated, lithium-soap, extreme-pressure grease containing molybdenum disulfide. It's designed for heavy-duty use in construction, industrial and agricultural equipment. It provides protection from extreme loads, shock loading or slow speed conditions.

PART NO.	DESCRIPTION	SIZE
73340211	Moly grease	Tube/14 oz.
87298946	Moly grease	35 lbs./15.9L
87298947	Moly grease	120 lbs./54.5L



### Synthetic Grease GR-1000 SSL (MAT 3550-D)

#### Part No. 87299163

GR-1000 SSL is a synthetic-based, NLGI No. 2, GC-LB, extreme-pressure grease for use in agricultural, construction, automotive and industrial equipment. It's designed for use in conventional and disc brake wheel bearings, universal joints, spline shafts, water pumps and general chassis lubrication. It provides excellent low- and high-temperature performance.



## SOIL COMPACTION TESTER

#### Part No. 73340409

- 24" stainless steel rod with adjustable shock collar to prevent damage to the gauge during transport or storage
- Easy-to-read, color-coded, stainless steel dial that is liquid-filled to reduce shock
- Durable molded housing with rubber-grip handles
- Large and small tip included with convenient storage in tester housing
- Hanger hole with nail included for easy storage on wall or above workbench



#### Specifications

Penetration depth  
Up to 24" in 3" increments

#### Two Tips Included

- 1/2" tip for firm soil
- 3/4" tip for soft soil

#### Green testing range (0-200 psi)

Good growing conditions

#### Yellow testing range (200-300 psi)

Fair growing conditions

#### Red testing range (300 psi and above)

Poor growing conditions



## CASE IH-BRANDED TOOLS

### 21-Piece Socket Set

**Part No. SC40001**

- Highly-polished chrome for appearance and durability
- Made from high-grade chrome vanadium steel
- Hardened for ultimate strength and durability
- Lifetime replacement warranty



### 8-Piece Wrench Set

**Part No. SC70001**

- 15° offset on box end provides knuckle clearance
- Nickel chrome finish for durability
- Dual-pawl ratcheting box end provides smooth operation and maximum strength
- Lifetime replacement warranty



### 45-Piece Bit Set

**Part No. SC18001AA**

- Made from high-grade chrome vanadium steel
- Nickel chrome finish for durability
- Lifetime replacement warranty



### 80-Piece Field Service Kit

**Part No. SC99980A**

Kit includes:

- (27) 3/8" drive sockets plus (1) ratchet, (2) extensions, (1) breaker bar and (1) universal joint
- (27) 1/2" drive sockets plus (1) ratchet, (2) extensions and (1) universal joint
- (2) screwdrivers
- (15) combination wrenches
- Lifetime replacement warranty



### Air Impact Wrench

**Part No. SC17050**

- Steel-nose case with lightweight aluminum housing
- Rotary-action air motors—ball-bearing mounted for balance, speed and power
- Pressure feed grease lubrication
- Five-position air speed regulator
- Convenient side bar forward/reverse
- Variable speed trigger—8,000 rpm
- 425 feet per pound max torque forward/reverse
- One-year warranty from date of purchase on parts and labor





## Slow-Moving Vehicle Signs

- Required on public roads
- Ideal for tractors, combines, plows, mowing crews, tow motors and other vehicles; ASAE (S276.6) -approved
- Made with high-intensity, micro-prismatic reflective and fluorescent materials
- Convenient mounting kit included



PART NO.	DESCRIPTION
MC3010	SMV sign, 0.04" thick aluminum, S276.6, 14" H x 16" W
MC3020	SMV sign, 0.80" thick aluminum, S276.6, 14" H x 16" W
MC3030	SMV emblem decal, S276.6
MC3040	Hardware kit (mounting hardware for aluminum and plastic)

## One-Camera Observation System (5.6" Monitor)

### Part No. ZAEWVOS5MDCL1B

- 5.6" wireless monitor with 12V accessory plug and suction-cup mount (ZAEWVOM513AP)
- CMOS wireless backup camera (ZAEWVCMS10B)
- Non-corrosive camera mounting bracket
- Additional input for one wired camera



## Fire Extinguisher Kits

Includes: Fire extinguisher, decal and mounting bracket.

PART NO.	APPLICATION
B94986	10-lb. capacity, UL-rated 4A-60 B:C
B95915	20-lb. capacity, UL-rated
47613710	Fire extinguisher assembly, NA, 7120/8120/9120 combines



## Multi-Camera Observation System with Quad-View

### Part No. ZAEWVOS7MDCL1Q

- 7" wireless multi-view monitor with four camera inputs
- Single split and quad display modes
- One wireless waterproof CMOS camera (ZAEWVCMSQ1B)
- (2) 5dBi antennas
- (2) 9.5' extension cables
- Mounting bracket



## Voyager Portable Power Strip

### Part No. ZAEJHDPS1

- (3) 3-pin AMP connectors
- (1) 12-volt power port, and (2) 1A and 2.4A USB ports
- Easily adapt any accessory with the 3-pin AMP connector (Part No. 187103A1) shown below



Part No. ZAEJHDPS1



Part No. 187103A1 (not included)

## BarnView Surveillance System

### Part No. ZAEBARNVIEW1

Keep an eye on your farm with the BarnView digital wireless surveillance system. With a viewing range of up to 1,000 feet, BarnView allows you to monitor up to four live areas at one time via your smartphone, tablet or included monitor. System includes docking station, built-in DVR and motion detection email alerts.

- 7" multi-view LCD touchscreen monitor with (4) camera inputs
- One waterproof camera with microphone
- Additional cameras sold separately (BARNVIEWCAM)



## HYDRAULIC CYLINDER DEPTH STOPS

Rustproof and lightweight stops are available for cylinders with shafts up to 2-1/2". Made from hardened, high-density aluminum, these stops have an integral one-piece design that is easy to use and store. Our stops are color coded to help keep things level from side to side.



SIZE	INDIVIDUAL	KIT OF 2	COLOR CODE
1/2"	350704A1	B94608	Red
5/8"	350703A1	B94609	Orange
3/4"	350706A1	B94610	Yellow
1-1/8"	350747A1	B94606	Black
1-1/4"	350702A1	B94611	Green
1-7/16"	350701A1	B94612	Blue
1-1/2"	350705A1	B94613	Silver
1-5/8"	350746A1	B94614	Black

### Depth Stop Kit

Part No. 1025810E

- (1) of each: 1/2", 5/8", 3/4", 1-1/4", 1-7/16", 1-1/2"



## CYLINDER STROKE CONTROL SEGMENTS

Designed to control the stroke on air or hydraulic cylinders; unique "Finger Tab" design on aluminum and steel models for easier installation and removal; clamshell package.

PART NO.	DESCRIPTION	SEGMENTS	PACKAGE QTY.
87299447	Fits 1-3/8" and 1-1/2" diameter shafts; aluminum; no finger tabs	3/4", 1", 1-1/4", 1-1/2"	1
87299448	Fits 1-1/8" and 1-1/4" diameter shafts; aluminum; no finger tabs	3/4", 1", 1-1/4", 1-1/2"	1
87299450	Fits 1-1/8", 1-1/4", 1-3/8" and 1-1/2" diameter shafts; aluminum; finger tabs	3/4", 1", 1-1/4", 1-1/2"	1
87299451	Fits 1-3/4", 1-7/8" and 2" diameter shafts; aluminum; finger tabs	1", 1-1/2", 2", 4"	1



Part No. 87299447  
Part No. 87299448

Part No. 87299450  
Part No. 87299451

## HUB AND SPINDLE ASSEMBLIES

For quick and convenient service, most spindles and hubs are available as complete assemblies.

PART NO.	DESCRIPTION	APPLICATION	POSITION	BEARING KIT
47437726	4-bolt hub and spindle assembly-used in 87421664	ATX12, ATX700, 700	Packer gang with 12" spacing	N/A
47437728	4-bolt hub and spindle assembly-used in 87421662	ATX700, ATX10, 700	Packer wheel with 10" spacing	N/A
B94349	12" packer wheel 4-bolt hub and spindle assembly	Concord Drills	12" packer wheels	N/A
84333255	5-bolt hub and spindle assembly	800 PRECISION	Packer	N/A
GD-161A	6-bolt hub and spindle assembly	700; 500/500T, ATX400, 400, ATX700, 800, PTX600	Various locations	6617
DR-615A	6-bolt hub and spindle assembly	400, ATX400	Wing dual caster	6615 or 47586504
87444631	6-bolt hub and spindle assembly	400, ATX400	Rear walk beam	6615 or 47586504
87428172	6-bolt hub and spindle assembly	5500 Drills, 955 Planters	Carrying wheel	123096A2 or 73340222 or 87428169
84472211	6-bolt hub and spindle assembly	500/500T	High flotation double caster 25' models rear walking wing 30' models	6615 or 47586504
84327548	6-bolt hub and spindle assembly	500/500T	Fixed rear wheel 25' models standard double caster 25', 30', 40' models center fixed wheel 25' models	6615 or 47586504
87443628	8-bolt hub and spindle assembly	400, ATX400	Rear walk beam	6811
87436722	8-bolt hub and spindle assembly	ADX3360, ADX3380, 2280, 2330, 3380	Front hub and spindle BSN 5306	6811
GH-811A	8-bolt hub and spindle assembly	ADX3360, ADX3380	Front hub and spindle start serial 5306	6811
87436726	8-bolt hub and spindle assembly	ADX3430, ADX3380	Front hub with 2-1/2" spindle	6812

## AIR SEEDER HOSES

PART NO.	ID	LENGTH (FEET)	COLOR	DESCRIPTION
<b>ORIGINAL EQUIPMENT</b>				
23655	7/8	100	White	Poly EVA
87410257	7/8	100	Black	Poly EVA
1032334	1	100	Clear	Clear PVC with white helix
4726	1	100	White	Poly EVA
86993485	1	100	Black	PVC
86992913	1	100	Black	Poly EVA
84340225	1	100	Black	PVC
87446431	1	100	Clear	Clear PVC with white helix
412786A1	1.25	100	Clear	Clear PVC
84346017	1.25	100	Black	PVC
8159	1.25	100	White	Poly EVA
86992262	1.25	100	Black	Poly EVA
1333818CX	1.375	100	Black	PVC
350447A1	1.5	100	Black	PVC
73358256	1.5	50	Clear	Clear PVC with white helix
6401	1.75	100	Clear	PVC
86992281	1.75	100	Black	PVC
86992283	1.75	100	Black	Polyurethane-lined extended wear
84533558	1.75	10	Black	PVC
1018883	2	100	Clear	Clear PVC with white helix
241305A1	2	100	Black	PVC
1032335	2.5	50	Clear	Clear PVC with white helix
1032336	2.5	50	Black	PVC
86993497	2.5	50	Black	Polyurethane-lined extended wear
86993494	2.5	100	Black	Polyurethane-lined extended wear
86992286	2.5	100	Black	PVC
3680	2.5	100	Clear	Clear PVC with white helix
1032275	5	28	Black	PVC
1032276	5	56	Black	PVC
1032338	5	100	Black	PVC
1032277	5	28	Clear	Clear PVC with white helix
<b>VALUE LINE</b>				
73342889	1	100	Black	1" × 100' black PVC
73343092	1	100	Clear	1" × 100' clear white helix
73342890	1.25	100	Black	1-1/4" × 100' black PVC
73342891	2.5	100	Black	2-1/2" × 100' black PVC
73343093	2.5	100	Clear	2-1/2" × 100' clear white helix



## AFS PRO 700—ONE CONTROL CENTER FOR ALL YOUR PRECISION FARMING NEEDS

As the cost of crop inputs continues to rise, the benefit of precision farming is evident—and the AFS Pro 700 is the one control center you need in your cab to be more productive. With a 10.4-inch color touchscreen and up to six run screens on a single monitor, you'll benefit from added capabilities with minimal complexity. Use it to fine-tune options such as remote valve timers and flow control, auto PTO, engine speed settings, wheel slip alarm, calibrations and implement settings, and other key machine functions.



### INCREASE PRODUCTIVITY WITH THE FOLLOWING OPTIONS FOR YOUR AFS PRO 700 CONTROL CENTER:

- **ACCUSTAT:** Available on the new 5 Series planters, the AccuStat advanced seed-sensing system allows farmers to monitor and map detailed seed spacing information, live. This high-performance seed sensor provides greater accuracy, while allowing continuous monitoring and immediate adjustments to maintain seed placement consistency on a per-row basis.
- **ISO TASK CONTROLLER:** The ISOBUS Task Controller streamlines all tractor functions on one display and allows for GPS-based rate and section control on select ISO-compatible implements.
- **ACCUCONTROL:** AFS AccuControl offers the ability to operate variable rate and section control applications on non-Case IH implements, reducing the need for multiple displays. AccuControl interfaces with the Field-IQ™ product line to control non-Case IH implements.

## AFS RTK<sup>+</sup>

Cellular-based correction available exclusively from your Case IH dealer:

- High accuracy and availability in North America
- Fast connection everywhere and at any time
- Flexibility for a single subscription for unlimited access; compatible with all hardware
- Supports profitability in all your farming tasks (seeding, fertilizing, spraying) thanks to the signal's sub-inch accuracy
- Simplicity with a single contact for your hardware and correction signal
- Quality and reliability backed by the Case IH support team

### Multi-Brand Compatibility\*

Regardless of the brand, you get instant access to the high-precision AFS RTK<sup>+</sup> network without having to manually switch from one reference station to another.

### Fast and Reliable Connection

The AFS RTK<sup>+</sup> network has a large number of RTK reference stations installed in North America – so a GPS signal is always available.

### Sub-Inch Accuracy

Regardless of the geographic position of your field, you can connect to the AFS RTK<sup>+</sup> network. It offers sub-inch accuracy, with a very short connection time.

### Download the Mobile App

Keep track and monitor the status of your fleet from your mobile phone. The AFS RTK<sup>+</sup> app is available for Android and iOS – download for FREE from the Google Play Store or Apple Store:



- Monitor your equipment and see surrounding reference stations
- Zoom in to see a specific vehicle or reference station
- View details of a vehicle or reference station
- Use list mode to see the active vehicles and filters



iOS



Android

## HOW DOES IT WORK?

- 1 A connection is made between the satellites, your vehicle and the AFS RTK<sup>+</sup> network
- 2 The information goes back to the central server for analysis of the data
- 3 The correction is sent to your vehicle instantly via cellular networks, which gives you sub-inch accuracy

Wherever you are, the correction is calculated from the surrounding network stations.

**Contact your local Case IH dealer to determine if your area has AFS RTK<sup>+</sup> coverage.**

\* Currently not compatible with John Deere's proprietary NCT data format.





## CASE IH REMANUFACTURED PARTS: MORE THAN REBUILDING

With Case IH remanufactured parts, cost- and time-efficiency meet demanding quality standards. These parts are remanufactured from their core—not rebuilt from the point of failure—and often tested to even stricter standards than during their original manufacturing. As a result, you have access to a line of like-new parts at a reduced price with a competitive warranty. Designed to install faster, drop-in assemblies minimize labor costs and maximize uptime.

## BENEFITS OF CASE IH REMANUFACTURED PARTS

- **SIGNIFICANT SAVINGS:** Case IH remanufactured parts cost less than new parts—offering great value while ensuring peak performance.
- **MORE CHOICES:** Every day, we look to add even more parts to our already extensive roster of Case IH remanufactured parts. This expanded offering gives you more options for your equipment needs.
- **HIGHER VALUE:** When you install our parts in your equipment, you can expect increased resale value.
- **OEM PERFORMANCE:** Unlike “will-fit” parts, we engineer each Case IH remanufactured part to deliver the like-new performance that meets stringent Case IH performance specs.
- **LESS DOWNTIME WITH INSTALLATION OPTIONS:** Because many Case IH remanufactured parts are ready to install, our service technicians can spend less time completing repairs and service. The results? Quicker turnaround and a whole new level of equipment uptime.
- **PROMPT CREDIT FOR YOUR CORE:** Your local dealer is equipped to provide a thorough analysis of your core. Contact your local dealer to discuss current value and criteria for returning your core.
- **SUPERIOR WARRANTY PROTECTION:** Unlike no-name competitors or rebuilds, our parts come with full warranties—the same or better coverage we offer for new parts.
- **QUALITY:** We completely clean, disassemble, etc., then thoroughly inspect and reassemble Case IH remanufactured parts to the latest OEM specifications for uncompromising quality.





## WARRANTIES FOR CASE IH REMANUFACTURED PARTS

	WARRANTY PERIOD	DEALER INSTALLED		NOT DEALER INSTALLED	
		PARTS	LABOR	PARTS	LABOR
<i>Remanufactured products not listed below</i>	6 months	Yes	Yes	Yes	No
<b>REMAN ENGINES/COMPONENTS</b>					
Replacement engines	24 months	Yes	Yes	Yes	No
Long-block engines	24 months	Yes	Yes	Yes	No
Short-block engines	12 months	Yes	Yes	Yes	No
Cylinder heads	6 months	Yes	Yes	Yes	No
Connecting rods	6 months	Yes	Yes	Yes	No
Fuel injectors	12 months	Yes	Yes	Yes	No
Fuel injection pumps	12 months	Yes	Yes	Yes	No
Turbochargers	12 months	Yes	Yes	Yes	No
Crankshafts	6 months	Yes	Yes	Yes	No
Fuel kits	12 months	Yes	Yes	Yes	No
<b>REMAN DRIVELINES</b>					
Clutches	12 months	Yes	Yes	Yes	No
Axles	12 months	Yes	Yes	Yes	No
Torque converters	12 months	Yes	Yes	Yes	No
Idler and roller wheels	12 months	Yes	Yes	Yes	No
<b>REMAN TRANSMISSIONS</b>					
Power shifts	12 months	Yes	Yes	Yes	No
Power shuttles	12 months	Yes	Yes	Yes	No
Manual transmissions	12 months	Yes	Yes	Yes	No
<b>REMAN GEARBOXES</b>					
Wobble boxes	12 months	Yes	Yes	Yes	No
Rotor drives	12 months	Yes	Yes	Yes	No
Torque amplifiers	24 months	Yes	Yes	Yes	No
<b>REMAN ELECTRICAL</b>					
Alternators	12 months	Yes	Yes	Yes	No
Starters	12 months	Yes	Yes	Yes	No
Generators	12 months	Yes	Yes	Yes	No
Controllers, ECUs, instrument clusters	12 months	Yes	Yes	Yes	No
<b>REMAN HYDRAULICS</b>					
Pumps	12 months	Yes	Yes	Yes	No
Motors	12 months	Yes	Yes	Yes	No
Cylinders	12 months	Yes	Yes	Yes	No
Valves	12 months	Yes	Yes	Yes	No
<b>MISCELLANEOUS</b>					
A/C compressors	12 months	Yes	Yes	Yes	No

PART NO.	PAGE NO.
3680	43
4726	43
6401	43
6752	34
7245	32
7246	32
8159	43
9825	32
21026	27
21618	36
21629	27
22626C	26
22846	26
22847	26
22848	26
23655	43
100641A1	35
108120A1	18
128817C1	16
130800A2	18
132096A1	39
133480A1	7, 29
137465C92P	19
141464C92	6, 7, 18
145156C91	17
149569C3P	19
187103A1	41
225349A1	10
228886A2	35
241305A1	43
290719A1	31
306001A1	36
306145A1	36
312945A1	28
321165A2	18
326924A2	16
332416A1P	19, 20
332417A2P	19, 20
336670A3P	19
346290A1	16
350232A1	27
350233A1	27
350234A1	27
350447A1	43
350701A1	42
350702A1	42
350703A1	42

PART NO.	PAGE NO.
350704A1	42
350705A1	42
350706A1	42
350746A1	42
350747A1	42
352954A1P	19, 20, 21
392257A1	16
404831A1	16
407408R1	38
407486R1	38
410526A1	7
412786A1	43
416015A1	7
416017A1	7
416018A1	7
416443A1	7
419594A1	7, 29
428354A1	7
431542A1	18
435480A1	7
448252A1P	19, 20
448253A1P	19, 20
547596R1	38
603020R92	6
818083C2	28
818085C2	28
819373C1	35
843364C92B	35
843364C92C	35
991049R2	38
1018883	43
1023510	27
1027915	27
1027945E	33
1030624E	33
1032199	27
1032275	43
1032276	43
1032277	43
1032334	43
1032335	43
1032336	43
1032338	43
1033282	28
1033379	27
1131548R2	38
1131916R1	38

PART NO.	PAGE NO.
1132221N	38
1277739C91P	19, 20
1277740C91P	19, 20
1277891C91	6
1279757C1B	28
1333818CX	43
1344517C2	18
1344911C3	6
1547680C1	8
1978894C1	16
25630601	18
25630602	18
25630801	18
47357837	31
47375935	16
47433844	27
47433845	27
47437726	42
47437728	42
47446028	36
47446031	36
47496216	8
47498134	8
47532784	13
47536733	14
47536734	15
47536736	15
47536737	15
47536738	15
47536740	14
47536741	15
47536743	15
47536744	14
47536745	14
47536746	14
47536747	14
47536748	14
47536749	14
47536750	14
47536752	15
47536753	15
47536754	15
47536756	15
47536757	15
47536758	14, 15
47536759	14
47536761	14, 15

PART NO.	PAGE NO.
47536762	14
47536763	14
47536764	14
47536765	15
47536766	15
47536767	14
47536769	15
47536770	14
47536776	14
47536778	14
47536779	14
47536780	14
47536781	14
47536782	15
47536783	14, 15
47536784	15
47556260	13
47613710	41
47651825	35
47673435	8
47678426	8
47692727	16
47710042	36
47815657	17
47828496	6
47832716	10
47900186	14
47900188	14
47900189	14
47927274	9
48030825	9
48030826	9
48030827	9
48030831	9
48031218	9
48097501	32
48097502	32
48118293	6
48118295	6
48118296	6
48120873	6
48120874	6
51200058	32
73340211	39
73340370	38
73340409	39
73340733	38



PART NO.	PAGE NO.
73340734	38
73340918	38
73341461	38
73341463	38
73341696P	21
73341697P	21
73341803	6
73341804	6
73342889	43
73342890	43
73342891	43
73342970	7
73343092	43
73343093	43
73343551	7, 29
73343553	7, 29
73343554	7, 29
73357622	6, 7
73358256	43
73358643	15
73358644	15
73358645	15
73358656	15
84158977	13
84159439	13
84159440	13
84161578	12
84161583	12
84161584	12
84193957	26
84193961	26
84193966	26
84193981	26
84236944	10
84317050	16
84327548	36, 42
84333255	42
84340225	43
84346017	43
84370996P	21
84373804P	19, 20, 21
84387533P	21
84387534P	20, 21
84389195	6
84389196	6
84389771	36
84389792	36

PART NO.	PAGE NO.
84389793	36
84393493P	21
84393494P	21
84393496P	21
84393497P	21
84393498P	21
84393499P	21
84395718P	21
84395719P	21
84398746	6
84416318	6
84416319	6
84423899P	21
84423900P	21
84423901P	21
84425475P	19, 20
84425476P	19, 20
84472211	36, 42
84485224	16
84485909P	19, 20
84485910P	19, 20
84485911P	19, 20
84485912P	19, 20
84525967P	21
84533558	43
84601418	10
84606219	10
86992262	43
86992281	43
86992283	43
86992286	43
86992913	43
86993485	43
86993494	43
86993497	43
86994218	16
87298627A	11
87298628A	11
87298811	27
87298812	27
87298813	27
87298944	39
87298945	39
87298946	39
87298947	39
87299163	39
87299447	42

PART NO.	PAGE NO.
87299448	42
87299450	42
87299451	42
87299504	35
87410257	43
87417442P	19, 20
87418698	26
87421662	31
87421664	31
87428172	42
87436722	42
87436726	42
87440810	29
87443628	42
87444631	42
87446431	43
87459131	13
87459135	13
87488385	36
87500715	28
87500716	28
87504325P	19
87505195	26
87506234	27
87506241	28
87506242	28
87506243	28
87506257	27
87506261	26
87506280	28
87506281	28
87506282	28
87506283	26
87506287	26
87506290	26
87506291	26
87506292	26
87506293	26
87506294	26
87506295	26
87506407	26
87506409	26
87508093	27
87563695	26
87584040	18
87604747	10, 36
87627347	10

PART NO.	PAGE NO.
87627348	10
87645554	35
87673673	27
87673693	10, 35
87673893	36
87686090	28
87688051	16
87693254	36
87695406	36
88715054	11
88715055	11
AS-858	27
AS-859	27
B94348A	31
B94349	42
B94350A	30
B94352	35
B94353	35
B94595	8
B94606	42
B94608	42
B94609	42
B94610	42
B94611	42
B94612	42
B94613	42
B94614	42
B94615	33
B94618	33
B94619	30
B94628	34
B94629	33
B94630	34
B94631	34
B94632	34
B94635	27
B94675	34
B94688	30
B94689	30
B94690	30
B94735	8
B94740	18
B94741	18
B94986	41
B95204	35
B95205	11
B95225	8

PART NO.	PAGE NO.
B95269	10
B95270	10
B95271	8
B95369	11
B95381	8
B95586	17
B95587	17
B95915	41
B96090	11
B96091	11
B96489	8
B96640	11
B96694	17
B96695	17
B96708	11
B96709	11
B500276	7
B500277	7

PART NO.	PAGE NO.
B505500	38
B505502	38
BARNVIEWCAM	41
BG-103V2	26
DR-615A	42
GD-161A	36, 42
GD-847V3	26
GH-811A	42
GL-512S.1	32
GL-513S.1	32
GL-514S.1	32
GL-515S.1	32
GL-516S.1	32
GL-518S.1	32
GL-522S.1	32
GL-523S.1	32
GL-524S.1	32
GL-525S.1	32

PART NO.	PAGE NO.
GL-526S.1	32
GL-528S.1	32
GL-532S.1	32
GL-533S.1	32
GL-534S.1	32
GL-535S.1	32
GL-536S.1	32
GL-537SV1	32
GL-538S.1	32
GL-563SV1	32
GL-992SV1	32
GL-993SV1	32
GL-994SV1	32
GL-995SV1	32
GL-996SV1	32
GL-997SV1	32
GL-998SV1	32
GP-102	28

PART NO.	PAGE NO.
GP-103	28
MC3010	41
MC3020	41
MC3030	41
MC3040	41
SC17050	40
SC99980A	40
SC18001AA	40
SC40001	40
SC70001	40
TP-351A	28
ZAEBARNVIEW1	41
ZAEJHDPS1	41
ZAEWVCMS10B	41
ZAEWVCMSQ1B	41
ZAEWVOM513AP	41
ZAEWVOS7MDCL1Q	41
ZSN18358	7



Sold and Serviced By: \_\_\_\_\_

**FOR THE LATEST PRODUCT INFORMATION,  
STOP BY YOUR LOCAL CASE IH DEALER OR VISIT:  
[WWW.PARTSTORE.CASEIH.COM](http://WWW.PARTSTORE.CASEIH.COM)**



PM-18013 Issued 02/2018 Replaces: PM-17493

©2018 CNH Industrial America LLC. All rights reserved. Case IH is a trademark registered in the United States and many other countries, owned by or licensed to CNH Industrial N.V., its subsidiaries or affiliates. CNH Industrial Genuine Parts is a trademark in the United States and many other countries, owned by or licensed to CNH Industrial N.V., its subsidiaries or affiliates. Any trademarks referred to herein, in association with goods and/or services of companies other than CNH Industrial America LLC, are the property of those respective companies. [www.caseih.com](http://www.caseih.com)